



NORTH COAST REPERTORY THEATRE

PRESENTS

BEAU JEST

By James Sherman

APRIL 22-MAY 17, 2026

North Coast Repertory Theatre

World-Class Intimate Theatre

A Not-For-Profit Professional Theatre | David Ellenstein, Artistic Director



The MOST HAPPY FELLA

Music, Lyrics and Libretto by
FRANK LOESSER

Set against the sun-drenched Napa Valley vineyards, this lush romantic masterpiece by Broadway's famed Pulitzer-prize winning Frank Loesser (*Guys and Dolls*) weaves a passionate tale of unexpected love. With soaring melodies and vibrant Broadway showstoppers, this sweeping musical radiates with the timeless message that true affection sees beyond outward appearances to the real beauty within. Come see what makes this fella so happy!

JUNE 3-JUNE 28

Directed by **JEFFREY B. MOSS**

northcoastrep.org | Box Office: (858) 481-1055

WELCOME!



Welcome to North Coast Repertory Theatre!

We are so happy you have joined us for James Sherman's wonderful family comedy, *Beau Jest!*

In the mid-1990s, I was lucky enough to be an actor in the tour of this joy-filled, touching and very funny play. I still carry the fondness of being involved in that lovely experience and the memory of the warm feelings that were created for the audiences that attended. This seemed to be a perfect time to create that for our beloved North Coast audience.

Following *Beau Jest*, *The Most Happy Fella* and *Scapin* still await us this season, and our 45th season approaches quickly. We have seven great titles in store for you. If you are a subscriber, thank you! You are the backbone of our efforts, and we will be happy to welcome you back to another exciting season.

If you are not a subscriber, we hope you will consider becoming one, that way you will assure yourself of your chosen seats to every show at the lowest price. We also have very lenient exchange policies if certain dates don't work for you, discounted tickets for your friends, and many other benefits that come with a subscription.

You, the audience, are always the final piece of the artistic puzzle. At North Coast Rep, we value and appreciate you.

Thank you for being here and for supporting live theatre.

Warmest regards

A handwritten signature in black ink that reads "David Ellenstein". The signature is fluid and cursive, with a long horizontal flourish extending to the right.

David Ellenstein
Artistic Director

DIRECTOR'S NOTE



Beau Jest is not merely a delightful Jewish comedy. Yes, the family is Jewish. They celebrate traditional holidays and rituals — a Sabbath meal, a Passover Seder. We hear names like Klein, Goldman, and Dintenfass. Foods like kugel and chrain are consumed. And yes, we are even treated to a little Yiddish.

Some might assume that a play like this one would have limited appeal — productions at JCCs and audience-specific theatres only. But that is not the case. Far from it. Just like another very Jewish show — you may have heard of it — *Fiddler on the Roof*, *Beau Jest* is immensely universal. It is a story about family. A story about not wanting to disappoint your parents. A story about worrying for the well-being of our children. A story about love. And what is more universal than that?

And of course, it is very, very funny. Humor is overwhelmingly universal too.

It has been a joy to revisit this play, having once performed the role of Joel nearly ten years ago. A decade later, the themes remain as timely as ever. And although the play is set thirty years in the past, they continue to resonate today. I have no doubt that *Beau Jest* will go on charming and amusing audiences for thirty more years to come.

But for now, I hope it will charm and amuse you, as it continues to do the same for me.

A handwritten signature in black ink, appearing to read 'Omri Schein', written in a cursive style.

Omri Schein

NORTH COAST REPERTORY THEATRE

David Ellenstein, Artistic Director Bill Kerlin, Managing Director

PRESENTS

BEAU JEST

BY JAMES SHERMAN

DIRECTED BY OMRI SCHEIN

STAGE MANAGER Christopher M. Williams*

SET DESIGN Marty Burnett

LIGHT DESIGN Matthew Novotny

COSTUME DESIGN Jennifer Brawn Gittings

SOUND DESIGN Evan Eason

PROPS DESIGN Michael Wogulis

HAIR & WIG DESIGN Peter Herman

PRODUCTION ASSISTANT Alyssa Hayden

PRODUCTION ASSISTANT Clarence Lightfoot III

CAST

(alphabetical order)

BOB SCHROEDER Sam Ashdown*

JOEL GOLDMAN Josh Cahn*

CHRIS CRINGLE Benjamin Cole

SARAH Katrina Michaels*

ABE Joel Polis*

MIRIAM Jill Remez*

TIME: Late 1980s

PLACE: Chicago

There will be a 15-minute intermission

★ **Season 44 has been made possible by the
generosity of The Step Family Foundation** ★

LEAD PRODUCTION SPONSOR

Leonard Hirsch

"Beau Jest" is presented by arrangement with Concord Theatricals on behalf of Samuel French, Inc. www.concordtheatricals.com

The videotaping or making of electronic or other audio and/or visual recordings of this production and distributing recordings or streams in any medium, including the internet, is strictly prohibited, a violation of the author(s)'s rights and actionable under United States copyright law. For more information, please visit: <https://concordtheatricals.com/resources/protecting-artists>.



*The actor or stage manager appears through the courtesy of Actors' Equity Association, the union of professional actors and stage managers in the United States | Actors' Equity Association (AEA), founded in 1913, represents more than 45,000 actors and stage managers in the United States. Equity seeks to advance, promote and foster the art of live theatre as an essential component of our society. Equity negotiates wages and working conditions, providing a wide range of benefits, including health and pension plans. AEA is a member of the AFL-CIO, and is affiliated with FIA, an international organization of performing arts unions. The Equity emblem is our mark of excellence. www.actorsequity.org

NORTH COAST REPERTORY THEATRE

BOARD OF DIRECTORS



Marc Tayer †
President



Marilyn Tedesco * †
Vice President



Elizabeth Tresp †
Vice President



Berit Durler †
Treasurer



Katy Tanghe †
Secretary



Steve Chapman



Eric Cohen



David Ellenstein



Brian Ganji



Stephen Gilliland



Sean Gref



Marsha Janger



Bill Kerlin



**Mark Christopher
Lawrence**



**Richard H.
Leib, Esq**



Michael Lerner



Patty Moises



Ryan Noell



Jeff Patterson



Don Sciglimpaglia



Karen Wilder



Marion Dodson*
Director Emeritus

* Denotes past President † Denotes Executive Committee member

Photography: Alex Kikis

PROFILES



JAMES SHERMAN (Playwright) is the author of the plays *Magic Time*, *The God of Isaac*, *Mr. 80%*, *The Escape Artist*, *Beau Jest*, *This Old Man Came Rolling Home*, *Jest A Second!*, *Romance in D*, *From Door to Door*, *The Old Man's Friend*, *Affluenza!*, *Half and Half*, *Relatively Close* and *Jacob and Jack*. James was a theatre student at Illinois State University in the early 1970s. He began his professional career as a writer and performer with The Second City in Chicago and received an M.F.A. degree from Brandeis University. Since 1985, he has had thirteen plays premiered at the Tony

Award-winning Victory Gardens Theater in Chicago directed by Dennis Zacek, and he was a founding member of the Victory Gardens Playwrights Ensemble. James' plays have been published and are regularly produced by theatres throughout the United States, and have also been seen in Canada, Mexico, Australia, South America, England, Germany, Austria, Turkey, South Africa, Australia, China and Korea. In the summer of 2006, James wrote and directed the movie of his play *Beau Jest*, starring Lainie Kazan, Seymour Cassel and Robyn Cohen. It is available on DVD. James currently teaches Playwriting and Improvisation at Columbia College of Chicago and DePaul University. He has been a teacher of Playwriting and Acting on the faculties of The Second City Training Center, Chicago Dramatists Workshop and Victory Gardens Theater. He was a visiting professor for the spring '01 semester in Seoul, South Korea at the Korean National University of the Arts. He has led workshops in Improvisation at the Esalen Institute in Big Sur, California. He has received grants from the Illinois Arts Council and has been the recipient of fellowships from The MacDowell Colony, the Ragdale Foundation, The Virginia Center for the Creative Arts, and Yaddo. He is a member of The Dramatists Guild of America.



OMRI SCHEIN (Director) is half of the musical theatre writing team of Lincoln and Schein, of which their musicals include: *The Evolution of Calpurnia Tate*, *The Remarkable Mister Holmes*, *Making Melrose*, *Grecian Burns*, *Fintastic Finn*, and the upcoming musical *Gene Wilder's My French Whore*. Other credits: *Mambo Italiano*, *Withering Heights*, and *Gary Goldfarb: Master Escapist* (NYMF Award Best Lyrics). Directing: *How To Succeed...*, *Jekyll and Hyde*, *Fiddler on The Roof*, and *Anything Goes* for SDMT, *Psycho Beach Party* at Southwestern College, and *The Mousetrap* at Grossmont

College. Acting: *Peril In The Alps* and *Murder On The Links*, *Baskerville*, *Babette's Feast*, *All in the Timing*, *A Funny Thing...ForumX3*, *Persuasion*, *Noises Off*, *The Explorers Club*, *Beau Jest*, *Laughter On the 23rd Floor*, *Around The World in 80 Days*, *The Underpants*, *The 25th Annual Putnam County Spelling BeeX3*, *Five Course Love*, *The Big Bang*, *When Pigs Fly*, Disney's *Beauty and The Beast*, *Dear World*, *The People Vs. Mona* (Off-Broadway/Cast Recording), *Hell's Belles*, *Henry V*, *Grease* (tour) and *When You're in Love*, *The Whole World Is Jewish*.

www.omri-schein.com

PROFILES



SAM ASHDOWN* (Bob Schroeder) is thrilled to be making his North Coast Rep debut! Credits include *The Glass Menagerie* (Maples Repertory Theatre), *Murder On The Orient Express* (The Old Globe), *Jane* (Lamb's Players Theatre), *A Christmas Story* (Nashville Repertory Theatre), *Macbeth*, *Hamlet* (Nashville Shakespeare Festival), *Henry V*, *Julius Caesar*, *The Taming of the Shrew*, *Henry IV Part II*, *Henry IV Part I*, *Sense and Sensibility* (Utah Shakespeare Festival), *The Bungler* (Shakespeare Theatre of New Jersey), *Shipwrecked*, *Starcrossed*, *The Merchant of Venice* (Gulfshore Playhouse), *To Master the Art* (TimeLine Theatre), *Sense and Sensibility* (People's Light), *Tom Jones* (Northlight Theatre), *The Liar* (Writers Theatre), *Twelfth Night*, *Richard III*, *Troilus and Cressida* (American Players Theatre), *Much Ado About Nothing*, *A Midsummer Night's Dream* (Montana Shakespeare in the Parks). TV/Film: "The Bootstrap Cafe," "Facsimile Machines," "Ruin Me." Education: M.F.A., University of Illinois at Urbana-Champaign, B.F.A., Southern Oregon University. www.samashdown.net

THIS ARTIST SPONSORED BY AYSE UNDERHILL



JOSH CAHN* (Joel Goldman) North Coast Rep debut! Josh is thrilled to be returning to the stage with *Beau Jest*. Theater credits include Alabama Shakespeare, The Engeman Theater, CRT, and more. TV & Film credits include projects for HBO, AMC+, NBC, Comedy Central, Adult Swim, and upcoming films "The Toast" & "Love Language." Josh has also been featured in more than 30 commercials and is a nationally touring stand-up comedian. He was recently awarded Best Next Jewish comedian by The Chosen Comedy Festival. Endless thanks to The Mine Talent Agency, JHA Management, and the team at North Coast Rep. Much love to his partner, Haley, his tiny chihuahua, Judith, & his actual Jewish mother who prepared him for this role. Josh is a proud member of the Actors' Equity Association & SAG-AFTRA. @JoshCahnmedy www.JoshCahn.com

THIS ARTIST SPONSORED BY HARY KAUFFMAN



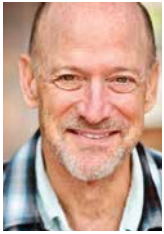
BENJAMIN COLE (Chris Cringle) is proud to lead as the Director of Theatre School Education and Outreach for North Coast Repertory Theatre. Ben has been seen on stage locally at The Old Globe, The La Jolla Playhouse, North Coast Repertory Theatre and many others. He has experience acting, teaching, directing, and fight choreographing all over the country including work with the Orlando Shakespeare Theater, the Oklahoma Shakespearean Festival, and the Illinois Shakespeare Festival. Check out upcoming options at the Theatre School: NorthCoastRepTheatreSchool.org.

THIS ARTIST SPONSORED BY NANCY KAYE



KATRINA MICHAELS* (Sarah) is delighted to share this story of matzah, mayhem, and mishpocha! Regional credits include: *Come From Away* — Janice/Accordion/Whistles/Piano (La Mirada); *A Hanukkah Carol* — Dickensian Orphan/Past Chava (Round House Theatre); *Peter and the Starcatcher* — Molly (Orlando Shakespeare/Argyle Theatre/Winnepesaukee Playhouse/Eagle Theatre); *Little Shop of Horrors* — Audrey, and *Pride & Prejudice* — Lydia/Lady C (Creede Rep); *Spelling Bee* — Logainne, and *Tribes* — Ruth (Florida Rep); *Cabaret* — Sally; *Twelfth Night* — Viola; *The 39 Steps* — Clown; *A Midsummer Night's Dream* — Hermia. NYC credits include *Hoi Polloi* — Pinkie (Theatre Row); *Rhinoceros* — Daisy; *Dracula* — Lucy; and *The Importance of Being Earnest* — Gwendolen. London credits include *Vanity Fair* — Becky Sharp; *Much Ado About Nothing* — Dogberry/Margaret/Accordion; *No for an Answer* — Francie (Arcola); *The Comedy of Errors* — Dromio of Ephesus; OFFIE-winning La Maupin. @katmichaels27 | www.katrina-michaels.com

THIS ARTIST SPONSORED BY SUE & DEAN MILLS



JOEL POLIS* (Abe) An award-winning actor based in Los Angeles, Joel has logged forty+ years in the professional theater. He was raised in Philadelphia and attended USC, NYU, and Yale Drama School. He has performed in theaters throughout the US, from NY's Off Broadway and the East Coast Regional Theater circuit to California's rich theater scene including San Diego's Old Globe, the Fountain, Mark Taper Forum, Odyssey, Pasadena Playhouse, South Coast and CV Rep theaters. Credits include *Julius Caesar*, *Richard III*, *My Name is Asher Lev* (LADCC, Stage Raw Awards), *Disgraced*, *Pound of Flesh* (LADCC nominee), *Names* (Dramalogue, Ovation awards), *Bach at Leipzig*, and *The Baby Dance* (original production). Joel's 120+ film, TV movies, and episodic credits include "The Thing," "The Rookie," "True Believer," "It's my Party," "Seinfeld," "Cheers," "Law and Order," "Northern Exposure," "Picket Fences" and "Star Trek Voyager." This "Jest" is for SaRah and Terry.

THIS ARTIST SPONSORED BY HILLARY & JEFFREY LIBER



JILL REMEZ* (Miriam) is thrilled to make her North Coast Rep Debut. Her theatre credits include: Latino Theatre Company: *Mix-Mix*, International City Theatre: *Myra*, *Deathtrap*, Wallis Theatre: *The Bluest Eye* (workshop production), OpenFist Theatre Company: *Ofelia*, *Anna in the Tropics*, West Coast Jewish Theatre: *Kate*, *Broadway Bound*, Mark Taper Forum: *Ensemble*, *Body of Bourne* (World Premiere), Laguna Playhouse: *Germaine*, *Picasso at the Lapin Agile*, South Coast Rep: *Sofia*, *Two Sisters and a Piano* (West Coast Premiere). TV & Film credits include: "Matlock," "Bosch: Legacy," "911," "Yellowstone," "This is Us," "The Neighborhood," "Curb Your Enthusiasm," "The Good Place," "Made for Love" & "Criminal Minds." VO credits include: *Zom 100*,

PROFILES

Demonlayer, The Grimm Variations, In/Spectre, Blue Exorcist and Lupin Part 6 as well as several video games.

THIS ARTIST SPONSORED BY DR. CYNTHIA & MARTIN DAVIS


CHRISTOPHER M. WILLIAMS* (Stage Manager) Christopher is a union actor and stage manager, as well as a director, producer, fight choreographer, designer, and instructor. Some of his credits include playing Nathan Rothschild in the original cast of the Off-Broadway production of *Rothschild & Sons*, opposite Robert Cuccioli; *Hamlet On Trial* with comedy legend Billy Connolly (Theatre League); *The Drawer Boy* and *A Moon for the Misbegotten* (AZ Theatre Company); *Noises Off* (Idaho Shakespeare Festival); *Angels In America: Part I & II*, and *Lobby Hero* (Actors Theatre); *Hamlet, Romeo & Juliet, Julius Caesar, Oliver!*, *West Side Story, A Funny Thing...Forum* (Southwest Shakespeare Company). Over the past 20 years, he has directed, stage managed or performed in 40 productions at North Coast Rep. Christopher has also worked as a producer, casting director, and on-set acting coach for the WWII feature "Walking with the Enemy," starring Sir Ben Kingsley and Jonas Armstrong.

DESIGNERS

MARTY BURNETT (Set Design) Resident Designer at North Coast Rep since 1992. Scenic designed more than 250 productions at the theatre. Resident Designer at Coronado Playhouse 1981-84 and Fiesta Dinner Theater 1984-87. Co-owner Props and Drops 1987-91, Designing for Union Plaza, Hacienda and Sahara Hotels and Casinos, Las Vegas; Harrah's, South Lake Tahoe and Claridge Hotel, Atlantic City; Drury Lane Theater, Chicago. At Laguna Playhouse designed *Chapatti, Alexandros*, and transfer designed *Beside Myself, A Gentleman's Guide to Love & Murder, Murder on the Links, The Angel Next Door, Tartuffe, Camelot*, and *Peril in the Alps* from North Coast Rep. Marty has a B.A. from Creighton University, Omaha, NE.

MATTHEW NOVOTNY (Light Design) is pleased to be designing another show for North Coast Rep, where he has designed close to 40 shows over the past seven years. Matthew is currently the Lighting Designer in Residence for San Diego Musical Theatre as well as North Coast Rep, and his work can be seen at a wide variety of theatres across San Diego. Matthew holds a B.A. in Technical Theatre from San Diego State and a master's degree in Lighting Design from Boston University. Matthew is married to his beautiful wife Amanda, with five AMAZING children: Ragan, Harper, Heston, Maddex, and Harrison.

JENNIFER BRAWN GITTINGS (Costume Design) is an award-winning Costume Designer based in San Diego. Most recently, she designed *All the Men Who Frighten Me* at La Jolla Playhouse. Other local credits include multiple costume designs for The Old Globe and Cygnet, 17 seasons at San Diego REP, and 13 seasons with MOXIE. Regional: *A Noise Within, Crossroads Theatre, Shakespeare Theatre New Jersey, The Western Stage.*



Accolades include four Craig Noel Awards, a Patté Award, and the NAACP Theatre Award. JBG is full-time costume faculty and head of technical theatre at Grossmont College. She's delighted to be back at North Coast Rep working with Omri.

EVAN EASON (Sound Design) is overjoyed to be back with North Coast Rep again! Previous credits: *What the Constitution Means to Me*, *Incident at Our Lady of Perpetual Help*, *Intimate Apparel*, *The Cherry Orchard* (North Coast Rep), *Vanya and Sonia and Masha and Spike*, *Evita*, *Lady Day at Emerson's Bar and Grill* (Cygnet), *Titus Andronicus*, *The Two Gentlemen of Verona* (USD MFA/The Old Globe), *A Streetcar Named Desire* (Backyard Renaissance), [title of show], *The Thanksgiving Play*, *Into the Woods* (New Village Arts), *Eighty-Sixed*, *The Mystery of Irma Vep* (Diversionsary), *Pick Me Last*, *Emily Driver's Great Race Through Time and Space* (La Jolla Playhouse).

MICHAEL WOGULIS (Props Design) is a scenic, projections, and props designer based in San Diego. Props design credits include *Beside Myself* (North Coast Rep/Laguna Playhouse), *Birthday Candles* (North Coast Rep), *Little Women* (Moxie Theatre), *Our Dear Dead Drug Lord* (Moxie). Scenic design credits: *Blues for an Alabama Sky* (Moxie), *The Prom* (San Diego Musical Theatre), *Miracle on 34th Street* (New Village Arts), *Clyde's* (Moxie). Projection design credits: *The Apiary*, *The Mountaintop*, *La Havana Madrid* (New Village Arts), *Cleopatra* (Moxie). Michael is an alumnus of UC San Diego, with both a BA and an MFA in scenic design from the university. michaelwogulis.com

PETER HERMAN (Hair) has previously designed wigs for more than 30 North Coast Rep productions. Peter teaches wig and makeup design at San Diego State University. He is glad to be part of the creative team on this show.

ALYSSA HAYDEN (Production Assistant) is delighted to be working with North Coast Rep. She has worked for nine years as a Stage Manager and Production Assistant in San Diego. Some of her work includes *She Kills Monsters* (San Diego City College), *Ripcord* (Coronado Playhouse), *LIT* (Blindspot Collective), *Dr. Seuss's How the Grinch Stole Christmas!* (Old Globe), *R-E-S-P-E-C-T* (Lamb's Players Theatre), *Somewhere Over the Border* (Cygnet Theatre).

CLARENCE LIGHTFOOT III (Production Assistant) *2 Pianos 4 Hands* Production Assistant — North Coast Rep, *Eisenhower: This Piece of Ground* Production Assistant — North Coast Rep, *The Prince of Egypt* Deck Crew — Moonlight Amphitheater.

CREW

ALYSSA HAYDEN

CLARENCE LIGHTFOOT

THANK YOU

Marni Fullington — Costume Assistant

PROFILES

CONCORD THEATRICALS is the world's most significant theatrical company, comprising the catalogs of R&H Theatricals, Tams-Witmark, Samuel French, The Andrew Lloyd Webber Collection, Dramatists Play Service and Playscripts, plus over 100 new signings each year. It is the only firm providing truly comprehensive services to the creators and producers of plays and musicals, including theatrical licensing, music publishing, script publishing, cast recording and producing. As a producer and record label, the company has won three Tony Awards and two GRAMMY Awards in the past six years.

IN HONOR & MEMORY

Judy Bentovim
in memory of Hilda Krattinger

Karen Begin
in memory of Bill Coltellaro

Carol Blumberg
in memory of Hilda Krattinger

Teresa & Mike Bullock
in memory of John Harris

Eric Cohen
in memory of Bill Coltellaro

Patti & Rick Cohen
in honor of Diana Glimm

Gigi Cramer
in honor of
Randall & Cameron Cramer

Marcella Cyr
in honor of Tiffany Tang

Dr. Cynthia & Martin Davis
in memory of Allen Moffson

Dr. Cynthia & Martin Davis
in honor of Marilyn Tedesco

Berit & Tom Durler
in memory of Hannah Step

Monica & Rob Eastin
in memory of Bill Coltellaro

Adrienne Feldner
in memory of Robert Feldner

Kerry Freshman
in memory of Hilda Krattinger

Judith & William Friedel
in honor of Nancy Richards

Pam & Hal Fuson
in memory of Bill Coltellaro

Ellen Geer
in honor of David Ellenstein

Ana Maria Grace
and the Cuccaro Family
in memory of Allen Moffson

Ana Maria Grace
in honor of Denise Young

June Gottleib
in honor of David Ellenstein

Ron Guerin
in memory of Caitlin Cohn

Dr. Charlie Hoar
in honor of Joe Hoar

Sonia Israel
in honor of Marilyn Tedesco
Connie Coe & Michael Kenner
in memory of William Coltellaro

Ilene Kruger
in honor of David Ellenstein

Judith Levin
in memory of Hilda Krattinger

Clark Libenson
in honor Jeff Patterson

Anni Lipper
in memory of Bill Coltellaro

Lisa & Dr. Stuart Lipton
in memory of Hannah Step

Carol Luery
in memory of Elizabeth Kruidenier

Marcia Malkus
in memory of Robert Malkus, MD

Susan McLeish
in memory of Bill Coltellaro

Gloria Miller
in memory of Hilda Krattinger

Jaime Perez
in memory of Hilda Krattinger

Pete Perez
in memory of Hilda Krattinger

Shirley Pidgeon
in memory of Hannah Step

Charles Perrin
in memory of Marilyn Perrin

Louise Rosenberg
in memory of Hilda Krattinger

Julie & Jay Sarno
in memory of Hannah Step

Carole Schreiber
in honor of Diana Glimm

Roy Sekigahama
in memory of Hilda Krattinger

Jo-Anne & Casey Smith
in memory of Mike Weinberger

Jo Anne Springer
in memory of Hilda Krattinger

Susan Stewart
in memory of Hilda Krattinger

Barb & Sam Takahashi
in memory of Bill Coltellaro

Marilyn Tedesco
in memory of Bill Coltellaro

Julie Ustin
in memory of William Coltellaro

Cathy Weil
in memory of John Weil and Allen
Moffson

Marilyn Weiss
in memory of Hilda Krattinger

Virginia Wofford
in memory of Hannah Step

Jim Ziegler
in memory of Bill Coltellaro

Ana Maria Grace
in honor of volunteer and donor
extraordinaire Bette Johnson



OFF SCRIPT

AT NORTH COAST REP

We asked several North Coast Rep staff members,
**“What’s the most surprising thing
about your role at North Coast Rep?”**

(Scan codes to watch video.)



Whether it’s actors, designers, or directors, the quality of people I get to work with here at the theatre is the most exciting part of my day.

Brian Mackey
Associate Artistic Director



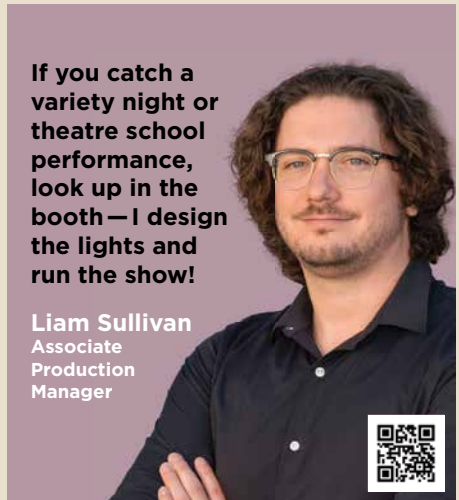
Theatre is a deeply collaborative art form — not just on the stage, but beyond. The various departments at North Coast Rep all come together in a way that is pure magic.

Coral McMurtry
Finance Manager




The tools an actor uses to sink into a role are actually quite similar to those of a fundraiser — emotional connection, communication, even memorization.

Marisa Kikis
Engagement & Individual Giving Manager



If you catch a variety night or theatre school performance, look up in the booth — I design the lights and run the show!

Liam Sullivan
Associate Production Manager



The Most Dazzling Night of the Year!

Supporting the HeART of Theatre in North County!



NORTH COAST
REPERTORY THEATRE

SPOTLIGHT GALA

Saturday, May 16, 2026 | 5 p.m.
Park Hyatt Aviara Resort, Carlsbad, CA

An Evening of Laughter
with Rita Rudner

Tickets on sale now!

*Step into the spotlight and become
a patron sponsor today!*

For more information contact:
Gabrielle Holley
gabrielle@northcoastrep.org
858-481-2155 ext. 200

NORTH COAST
REP
northcoastrep.org





Who defines San Diego's culture?

San Diego is a region full of people, art and movements redefining our cultural identity and reshaping our communities and expressions.



Listen to *The Finest*, a new podcast from KPBS that deepens our understanding of why we are America's Finest.



Listen wherever you get your podcasts.

kpbs.org/thefinest



KPBS is a public service of San Diego State University.

THE CLASSIC THRILLER GETS TRANSFORMED AS A HIGH-SPEED RIDE FILLED WITH LAUGHS AND SUSPENSE

ALFRED HITCHCOCK'S

NORTH BY NORTHWEST

ADAPTED AND DIRECTED BY EMMA RICE



TICKETS ON SALE FRIDAY, MAY 22 AT NOON
JULY 3 – AUGUST 2

Mirabelle Gremaud, Patrycja Kujawska, Ewan Wardrop, Simon Oskarsson, and Katy Owen in *North by Northwest*. Photo by Steve Tanner.



LD GLOBE (619) 234-5623 • TheOldGlobe.org

See how our work lives beyond the stage • TheOldGlobe.org/Beyond

North Coast Rep Staff

David Ellenstein

Artistic Director

Bill Kerlin

Managing Director

Benjamin Cole

*Director of Theatre School,
Education & Outreach*

Nancy Richards

*Director of Marketing
& Public Relations*

Jeff Needham

*Patron Services & Information
Technology Director*

Brian Mackey

Associate Artistic Director

Denise Young

Director of Development

Matt FitzGerald

Production Manager

Liam Sullivan

Associate Production Manager

Geoffrey Ulysses Geissing

Development Associate

Marisa Kikis

*Engagement &
Individual Giving Manager*

Marty Burnett

Technical Director

Tim Baran

Associate Technical Director

Gabrielle Holley

*Events, House
& Volunteer Manager*

Noelle Marion

Marketing Assistant

Steve Smith

Administrative Assistant

Austin Jenniches

Box Office Manager

Coral McMurtry

Finance Manager

Fran Morilak

Finance Assistant

Michael Podd

Sales

Donovan Bakin, Diane Bradley,

**Alyssa Cook, Maggie Harris,
Nan Pace**

House Management

Donovan Bakin

Patron Services Lead

Andrea Campuzzano, Annabelle

Ouellet, Amanda Schaar

Patron Services

Benedict Heaps, Kaylin Poblete

TS@NCRT Education Assistants

NORTH COAST REPERTORY THEATRE

North Coast Repertory Theatre, under the artistic leadership of David Ellenstein since 2003, is a professional Equity theatre currently celebrating its 44th Season. North Coast Rep has received critical acclaim from media and audiences alike and has evolved into one of the area's leading performing arts organizations. North Coast Rep prides itself on employing the majority of its actors from Actors' Equity Association for its high quality, award-winning productions, and staging works by established and emerging playwrights. Throughout its history, North Coast Rep has created a platform where artist and audience thrive through the intimacy of live theatre, recognizing the power of theatre to challenge complacency, revitalize the imagination, nurture the unexpected, and embrace the variety and diversity in our lives.

GENERAL INFORMATION

Theatre Address

987 Lomas Santa Fe Dr.
Suite D
Solana Beach, CA 92075

Box Office

Hours are Monday-Sunday
Noon to 4 p.m.
Performance days
Noon to curtain.
858.481.1055
Fax 858.481.1527

Group Sales

858-481-2155 ext. 202

Administrative Office

977 Lomas Santa Fe Dr.
Suite E
Solana Beach, CA 92075
Hours are: 9 a.m. to 5 p.m.
858.481.2155
Fax 858.481.1527

Website

northcoastrep.org

Restrooms

Accessible restrooms are located in our cafe and additional restrooms are located upstairs in the courtyard area.

Parking

There is plenty of safe, free parking directly in front of the theatre and additional parking is available behind the theatre.

Late Arrivals

Late arrivals will be seated at the discretion of the house manager. Latecomers may be asked to wait until intermission to be seated or reschedule. We encourage our patrons to plan ahead as weather and traffic may delay your arrival.

Show Content &

Age Restrictions

North Coast Rep does not offer advisories about subject matter, as sensitivities vary from person to person. If you have any questions about content, age-appropriateness or stage effects (such as strobe lights or theatrical fog) that might have a bearing on patron comfort, please contact the box office at (858) 481-1055. All patrons must have a ticket regardless of age. No children under 6 years of age will be admitted to main stage productions. NORTH COAST REP IS NOT RESPONSIBLE FOR LOST OR STOLEN ITEMS.

In consideration of your fellow patrons...

For your safety and as a courtesy to the performers, please remain seated until the performance has ended and the house lights have come on. Please turn off cell phones, watch alarms, and beepers. Heavy fragrances (perfumes/colognes) can be distracting and cause allergic reactions for some guests. Please be considerate of others. Use of camera and recording devices is not permitted in the theatre. Smoking is permitted only in the outdoor courtyard of the theatre. Use of a ticket constitutes acknowledgement of willingness to appear in photographs taken in public access areas of the theatre and releases it and all others from liabilities resulting from such photographs.

DAVID ELLENSTEIN
ARTISTIC DIRECTOR

Born into a theatrical family, David has worked in theatres across the country. Before joining North Coast Rep in 2003, he served as Artistic Director for the Los Angeles Repertory Company and the Arizona Jewish Theatre Company (AJTC). He currently serves as Artistic Director of North Coast Rep. A veteran of over 250 theatrical productions, directorial favorites include:

North Coast Rep – *Louisa Gillis, Beside Myself, Birthday Candles, A View from the Bridge, Sense of Decency, The Angel Next Door, Eleanor, The Cherry Orchard, Annabella in July, The Remarkable Mister Holmes* (also co-author), *The Homecoming, Ben Butler, Dr. Glas, Becoming Dr. Ruth, Einstein Comes Through, Trying, An Iliad, A Christmas Carol, Same Time, Next Year, The Outsider, All in the Timing, Holmes & Watson, A Funny Thing Happened on the Way to the Forum, The Father, This Random World, Travels with My Aunt, The Illusion, Hedda Gabler* (World Premiere Translation), *Way Downriver; William Faulkner's 'Old Man'* (West Coast Premiere), *Sherlock Holmes and the Adventure of the Great Nome Gold Rush* (World Premiere), *Side by Side by Sondheim, Chapter Two, Freud's Last Session* (San Diego Premiere), *Faded Glory* (World Premiere), *Mandate Memories* (World Premiere), *Becoming Cuba* (World Premiere), *Time Stands Still, Words By: Ira Gershwin and the Great American Songbook* (World Premiere), *Two by Pinter: The Lover and The Dumb Waiter, HENRY IV Part 1, Heroes, My Name is Asher Lev, The Drawer Boy, Becky's New Car, Ghosts, The Tempest, Talley's Folly, Over the Tavern, Old Wicked Songs, The Dresser, Jacques Brel is Alive and Well and Living in Paris, Madagascar, A Shayna Maidel, The Honky-Tonk Angels, Rashomon, A Moon for the Misbegotten, Tuesdays with Morrie, Collected Stories, Halpern and Johnson, Romeo and Juliet, Amy's View, Einstein Comes Through* (also co-author); *The Chosen, A Life in the Theatre, Story Theatre, and Charley's Aunt*. Coconut Grove Playhouse - *Sonia Flew* starring Lucie Arnaz; *Halpern and Johnson* starring Hal Linden and Brian Murray. Papermill Playhouse - *The Chosen* starring Theodore Bikel and John Lloyd Young. 59E59 - *His Royal Hipness Lord Buckley*. Park Square & Colony Theatre – *Words By: Portland Stage - Halpern and Johnson*. Renaissance Theatre - *Long Day's Journey Into Night*. Actor's Theatre of Phoenix - *Rabbit Hole*. Alabama Shakespeare Festival - *The Glass Menagerie, Rocket City* (World Premiere) and *Honky-Tonk Angels*. Laguna Playhouse - *Chapatti, Alexandros* (World Premiere). Southwest Shakespeare Company - *Cyrano de Bergerac*. AJTC - *Awake and Sing*. Meadow Brook Theatre - *A Christmas Carol*. Portland Rep - *Conversations with My Father* and Gaslamp Quarter Theatre - *A Shayna Maidel*.

Winner of numerous theatre awards, including the San Diego Theatre Critics Circle Award for "2018 Director of the Year."

Favorite roles as an actor include Andrey Botvinnik in *A Walk in the Woods*, Max Prince in *Laughter on the 23rd Floor*, Matt in *Talley's Folly* at North Coast Rep, title roles in *Hamlet* at Los Angeles Theatre Center and Los Angeles Repertory Company; *Tevye in Fiddler on the Roof* at Moonlight Stage; Richard III at California Shakespeare Festival; Einstein in *Picasso at the Lapin Agile* at Laguna Playhouse; Calisto in *The Illusion* at the Arizona Theatre Company; Jonathan in *Sight Unseen* at North Coast Rep and Portland Repertory Theatre.

Film and television credits include over three dozen roles including "Star Trek IV," "The Practice," "Foul Play," "Christine Cromwell," "Renegade," "Eight is Enough" and "General Hospital." David has also been guest faculty for numerous universities including California State Northridge, Cal Arts, and Shakespeare workshops privately. David lives with his beautiful wife Denise and their amazing sons Jamie and Will.

For sponsorship or to become a donor, please contact:

Denise Young
858-481-2155 ext 210
denise@northcoastrep.org

For questions regarding the Theatre School@ North Coast Rep, please contact:

Benjamin Cole
858-481-2155 ext 216
ben@northcoastrep.org

To advertise in this program or for other advertising opportunities, please contact:

Nancy Richards
858-481-2155 ext 220
nancy@northcoastrep.org

For group sales information and tickets, please contact:

Michael Podd
858-481-2155, ext. 202
groupsales@northcoastrep.org

For tickets, please call or go online to:

858-481-1055
www.northcoastrep.org
Toll-free 888-776-NCRT (6278)

Melani Bruce
Volunteer Marketing Assistant

Donna D'Angelo
Barron Henzel
Graphic Designers

Denise Young
Webmaster

Bob Waller,
Insight Biz Coach LLC
Consultant

Julie Nemitz
Digital Marketing Consultant

Theatre School Instructors at
NorthCoastRepTheatreSchool.org

SUPPORT AND GIFTS TO NORTH COAST REP

LEADING ROLES

North Coast repertory Theatre thanks these generous individuals and organizations for supporting our commitment to consistently deliver high quality professional theatre to our audiences in North County. Please consider joining our family of arts benefactors with a gift of your own. Gifts large and small make a big difference!

All donations listed from March 30, 2025 to March 30, 2026.

* Members of *Encore! Annual Giving Society* The cross (†) denotes deceased.

Benefactor's Circle \$100,000+

The Step Family Foundation*

Founder's Circle \$50,000+

Eric Cohen*

The Lee & Frank Goldberg Family*

Karyn Kobayashi & Jim Jacobs*

Rita Koor†

Mary Ann Whittier-Johansen*

President's Circle \$25,000+

Anonymous

Bobbie Ball*

Berit & Tom Durler*

Shirley Estes

Leonard Hirsch*

Stanley Siegel*

Producer's Circle \$10,000+

Carol Davidson & Dr. Stephen Baird*

Eloise Batts*

Cathy & Dr. Richard Buller*

Karen & George Bullette*

Carol & Dr. Jeffrey Chang*

Cynthia Cummings

Gary Davis

Judith Sedler & Douglas Druley*

Pam & Harold Fuson*

The Gess Foundation

Sean Gref

Joan & Irwin Jacobs

Dr. Robert J. Kilian*

David Laing†

Sheila & Jeffrey Lipinsky*

Mrs. Steven Maloney*

Jacqueline Bridge & Nate McCay*

Patricia Moises*

Dori & Jeff Patterson*

Mary Ann & David Petree*

Jeannie & Gerry Ranglas*

Barbara Lynn & Richard S. Rosebrock*

Lynne & Mason Rosenthal*

Nancy & Jim Saw*

Becky & Don Sciglimpaglia*

Marsha Janger & Richard Shapiro*

Donald Shepherd*

Sharon & Jerry Stein*

Lisa Cohen & Mike Step

Stern Leichter Foundation*

Jeanette Stevens*

Amy & Mike Warlick*

Jo & Howard Weiner*

Dr. Charles Wheatley*

Sherry & David Winkler

Director's Circle \$5,000+

Barbara Anderson

Loyce R. Bruce*

Susan & Dr. Joel Buxbaum*

Jamie Carr*

Fang Fang & Steve Chapman*

Gretchen Vik & Larry Clapper

Gigi Cramer*

Dr. Cynthia & Martin Davis*

The Dodson Family Trust*

Dr. Bonnie Ann Dowd*

Jenny & Mark Dowling*

Katie & Jim Fish*

Diana Glimm*

Drs. Vivian & Richard Giudice

Jill G. Hall*

MaryJo McCall & Rod Innes*

Linda & Bronson Jacoway

Elizabeth Anne Johnson*

David K. Jordan*

Dr. Diane Grinkevich Kane &

John Kane*

Laurie Karzen

Harv Kauffman*

Nancy Kaye

Regina Kurtz

Kelley & Mike Lerner

Hillary & Jeffrey Liber*

Beverly & Herb Liberman*

Robin Lipman*

The Menard Family Foundation

Sue & Dean Mills

Josephine & James Myers

Marina & Rafael Pastor*

Charles Perrin*

Vivien Ressler

Marti & Adam Rosenberg*

Judi & Jon Schmauss*

Dee Silver, MD

Holly Smith Jones*

Julie & Jay Sarno*

Barbara & Mark Spiro

Barb & Sam Takahashi

The Tanghe Family*

Kathleen Roche Tansey &

Dr. David Tansey

Stephanie Tarkington*

Wendy & Marc Tayer*

Marilyn Tedesco*

Elizabeth & Brian Tresp*

Ayse Underhill*

Warren Family Foundation

Karen B. Wilder

Nikki Winston

Playwright's Circle \$2,500+

Carol Rolf & Steven Adler

Alexia & Paul Anas*

Laura Applegate*

Beth Bieger*

Johanna Lee Brody*

Helen & Darrell Brookstein*

Dr. Marilyn Bruno*

Jenny & Mark Dowling*

Hilary & Hal Dunning*

Karin & Dr. Alfred Esser

Adrienne Feldner*

Terrie Georgi & Bruce Gerhardt

Dr. Cindi & Stephen Gilliland

Cathy Golden*

Donna & Tom Golich*

Eduardo Pena Herrera &

Robert Haskell

Jamie Henson & Robert V. Houskeeper

Sandy & Mervyn Kodesh*

Linda Wilcox Lenhard &

Mark Kritchevsky

Drs. Jolene Koester & Ron Lustig*

Nancy & Brian Malk

Suzi Resnik & Stan Marks

Janis & Raymond Musante

Tambra & Ryan Noell

Linda Sarnowsky*

Teresa Shaffer

Deborah Simpson

Lorraine Stamoulis Surnamer*

Help support World Class Professional Theatre by donating to North Coast Rep!



Karen Surtes
Jonathan Tibbits
Beryl Young*
Christy & Howard Zatkin
Terri Zimdars

Designer's Circle \$1,000+

Anonymous
Mireille Lucette Anderson
Julie & Patrick Andrews*
Weston Anson
Sherry Santa Cruz & Alexander Ardwin
Connie Smith Ball & Ron Ball
The Balsdon Family
John Barbour
Eva & Steven Barnes
Andrew Barnicle
Debi & Terry Baxter*
Angela Behrens
Sue & David Beith
Judy & Larry Belinsky
Janelle Berghoff
Barbara & Gary Blake*
Cindy & Steve Blumkin
Ginny & Dick Bridy
Dori Brown
Kellan Brown
Sally & Andy Buffington
Cate Caplin*
Kathleen & Joe Carroll
Cathy & Michael Casteel
Susan & Tony Childs*
Susan Steele & Michael Conley
Patricia Jean Cook
Donna Cross
Dr. Karen Curd
Candace Curlee
Kate & Tom Dalton
Jamie Detweiler
Kathy & Bill Dougherty
Karen Dow
Harriet Kounaves & Christopher Duke
Denise Young & David Ellenstein
Robin & David Fantin
Pat & Dr. Bruce Feldman
Katherine & Dr. Tom Foster*
Margie & Dan Frazee
Craig Frieauf
Stephanie Kogan & Lawrence Fritz
Richard Goldman
Ana Maria Grace
Carrie & Jim Greenstein*
Paula Halprin
Nancy Hand
Kim Godwin & Nathan Heller
Megan & Peter Hoagland
Dr. Charlene Hoar
Maryka Hoover*
Jennifer & Jim Hurley
Sonia Israel
Marla & John Jensen

Barbara & Dick Justice*
Arline Kennedy
Connie Coe & Michael Kenner
Kendyl & Sean Kenny
Barbara & Gerald Kent
Nat Koren
Tina & Julian Krinsky
Joseph & Donna Labonte
Wendy Wang & Jac Lang*
Betty Lange*
Sherrie & Michael Laver
Sharon & Richard Leib*
Diana & Eli Lombrozo
Neysa & Steve MacBaisey
Mhairi & Brandon Marsh
Monica Marvin
Anne & Andy McCammon
Judy McKay
Rona Landy McKechnie
Kristine McNamara
Chuck Mol
Judy Montague
Fran & Dan Morilak*
Susan & Charles Muha
Paul Mahan & Jeff Nelson
Robert Nowlan
Phyllis & Jerry Olefsky
Joann Onishi-Mogg
Par & Kenneth Perea
Gale & James Petrie
Shirley & Harold Pidgeon*
Barbara Rabiner
Keren & Joe Ramsdell
Janet & Bill Raschke
Ellen & Gene Rotterman
Marcia Schofield
Dr. Thomas A. Schweller*
Carolyn Scott
Steve Seaborg
Jill & Stephen Seagren
Patricia & John Seiber
Linda & Jeffrey Shohet
Dr. Ed Siegel
Candace Berkman & Len Simon
Howard Singer
Sabina Wyss & Michael Singer
Denise & Eric Sparks
Nancy & Alan Spector
Cynthia Stern
Jill Stone
Carolyn & Dr. John Strauss*
Susan & Ron Styn
James Sutorius
Geoffrey Swortwood
Trudy Synodis
Elizabeth Taft
Marybeth & William Thayer
Sylvia Steding & Roger Thieme
Drs. Christine White & Joseph Traube
Susan & Richard Ulevitch*
Martha & Dr. Vernon Ummell

Kaylin & Scott Union
Carol Vassiliadis*
Monica Viotto
Mary Lou & Terry von Klein
Maria Walker
Margaret & Charles Weigand
Cathy Weil*
Jocelyn Shannon & Jane Weiss
Robin & Kerry Witkin
Dr. Ann Wycoff
Lynn & Jim Yahr*
Britt Zeller
Karen & Sidney Zisook

Actor's Circle \$500+

Anonymous
Kathleen & Charles Ables
Dr. Irene Abraham
Judith Adler
Robin Allgren
Deirdre & Michael Alpert
The Barrett Family
Judy & Charles Beck
Michele Gorcey & Ken Biblowitz
Samantha & Nick Binkley
Mary Blansett
BJ & Peter Boland
Susan & Jim Boland
Nina Borwick
Catherine Boyer
Judith & Dan Boyle
James Buchanan
Priscilla Burpee
Leah & Robert Cohen
Karyn Cook
Linda & Dennis Costello
Nancy Cunningham
Lieu Curtis
Caroline DeMar
Diane & Dr. Steven Demeter
Barbara & Walter Doren
Marti Eisenberg
Monica Fernandez
Emmaculate Fields
Rachel Findling
Maria Frase
Sue & Dr. Ben Frishberg
Deanne Gage
Ryan Garrett
Lynn & Charles Gaylord
Mark Geyer
Russell Ginns
Ron Guerin
Joan Hadden
Julie Halliday
Lynn & Tom Hawkins
Judy & Tony Hugli
Dr. Michael Humphrey
Janis Jones
Susan & David Kabakoff
Linda & Kenneth Kaczmarek

SUPPORT AND GIFTS TO NORTH COAST REP

Gina Kakos
Kaaren Kerlin
Dana Korey
Dr. Marvin Kripps
Tamara Lafarga
Karl Landgraf
Karen Lare
Renee Levine
Marshall Lewis
Anni Lipper
Lisa & Dr. Stuart Lipton
Eric Lodge
Robin Luby
Lucie Arnaz & Laurence Luckinbill
Johnny Mah
Marcia Malkus
Charlotte Mata
Gail McBride
Joanna McClelland Glass
Susann Green & Arnold Mittelman
Janice & George Muller
Lawrence Newmark
Margaret & Stephen Norton
Mary Norwood
Arleene Antin & Leonard Ozerkis
Kim Page
Susan Parker
Ann Drucker & Dale Patterson
Judy Pressman
Maureen Moss & Bill Pultz
Constance Gonczy & Steven Reich
Elsa & Keith Rickard
Jodyne Roseman
Robin Roulette
Christine & Wayne Rounsavell
Metje Saffir
Peter Schultz
Cathy & Scott Shaw
Albert Shifberg-Mencher
Carol Smith
Jo-Ann & Casey Smith
Marina & Steven Smith
Katherine & Joel Spengler
Kathleen & Al Steele
Lisa Striebing
Kym & Michael Tedesco
Cindy Tiefenbrunn
Jennifer Tillman
Debra & James Tomcik
Natalie Verbeck
Joyce Vigneaud
Susan & Merle Vogel
Annette & Walter von Klein
Joan Wapner
Lesia Wells
Linda Wessling
Suzy Westphal
Judith White
Dr. Nancy Wight
Lenore Wilkas
Dr. Ricki Weinberger & Alan Wilson
Dorothy Wood

Bonnie Wright
Jeri Yacovelle
Sandra & Art Yayanos
Mary Yoder
Brenda & Dave Zito

Star \$250+

Anonymous
Beth Levine & Henry Abarbanel
Virginia Abushanab
H. Allen Adams
Paula Alexander
Torry Alpizar
Nancy Anderson
Sue Anderson
Colleen & Augusto Angelucci
Mary & Phil Arana
Loren & Jim Archer
Cathy Baron
Colleen Barret
Cynthia & Arthur Birnbaum
Dr. Ruth Black
Elizabeth Mullarkey & Rob Bryson
Debby & Todd Buchholz
Jane Leslie Burgin
Nancy & James Byrne
Barbara Calvao
Millie Carr
Douglas Carsten
Jane Cassidy
Nancy & Allan Chapman
Carol Cheney
Dr. David Cohen
Patrick Cole
The Coleman Family
Michelle Conde
Sara & Kirk Cowles
Steven Davis
Barbara & Dan Dickey
Jeanine Dreifuss
Debby Dunn
Dr. Ruby Hinds Edman
Leon Embry
Andrea Bogardus & Ernest Fena
Pat Fitzmorris
Amy Flicker Winter
Eva Freeman & W. Randolph Franklin
Beverly Fremont
Colleen & John Garbaczewski
Maxine & Arthur Geller
Henry George
Bonnie Gibbs
David Gillespie
Susan & Richard Gilroy
Lynn & Marty Glick
Arlene & Kenneth Glube
Phyllis & Morris Gold
Lisa & Fred Goldberg
Gayle & Dwight Gordon
Nikki Gottlieb
Marion & John Greenland
Sue Greenway

Nancy & Paul Hackert
James Hackett
Kathy Hagenbach
David Hagstrom
Della Janis & Robert Halleck
Heidi Dewar & Marc Halpern
Dr. Carol Harter
Dr. Christy Hendrickson
Stephanie Wilde & Tom Heywood
Shirley Higgins
Victoria & Colin Holman
Laurie Hoshaw
Carole & Dennis Hurst
Pat & Bob Husa
Dr. Jeannette & R. Douglas Johnson
Carol Kane
Miriam Kastner
Nan Katona
Susanne & William King
Terry & Dr. McLean King
Leonard Kreisman
Rosemarie Kubes
Joann Kuser
Frances & Jack Kyte
Patricia Lamont
Janette & Charles Larson
Dr. Denise Lew
May Liu
Hamilton Loeb, Jr.
Valerie Nemeth & Gary Loomis
Laurel Marion
Mary Mathis
Mary McDevitt
Ann & Brian McDonald
Paula & Douglas McGraine
Diane Milberg
Tom Mills
Rena Monge
Janice Morris
Kyomi O'Connor
Leona & Martin O'Connor
Robert Paluzzi
James Patterson
Sandra Perlatti
Ann & James Peter
Donna & Al Przecha
Darrell Pugh
Sue Quinn
Bingo & Gino Roncelli
Norman Charles Rosen
James Royle, Jr.
Didi & Gary Saks
Charles Schmitt
Candace Young-Schult & Roy Schult
Astrid & Bill Shannon
Marilyn & John Shelton
Bruce Shirer
Laurel Shupp
Beverly & Howard Silldorf
Jeffrey Southerton
Ann & Andrew Spector
Carolyn & Gordon Stables

Help support World Class Professional Theatre by donating to North Coast Rep!



Eve & Alan Stall
Sheryl Stern
Jan & David Stormoen
Marlene Zagon & Mort Tuchin
Julie Ustin
Andrea Van Vranken
Anne Thompson & Andrew Welch
Abe Wilson
Phyllis Yates
Dr. Steven Jaeger & Joe Zilvinskis
Jay Zybelman

Cameo \$100+

Anonymous
Diana L. Adam
Helen Adams
Mary & Anthony Alario
Sharon Alix
Alicia Atun
Ken Baca
Elizabeth & Neil Balmert
Shellee & Nick Batzdorf
Peter Baurer
Sona & Dr. Warren Becker
Scott Beekman
Phylaine Bemel
Arlene & Ed Bender
Linda Bennett
Jane Benton
Jan Corash & Michael Berdan
Nancy Bergner
Susan Betts
Drs. Paola Lanza & Rosario Billetta
Bob Bjorkquist
Dr. Joseph Bonanno
Nancy Bonnafox
Lisa & Dennis Bradley
Judi Brent
Susan & Donald Briggs
Slader Buck
Teresa & Mike Bullock
The Bunyak Family
Cristina Burlem
Eleanor Burton
Cathy Busby
Nancy & James Byrne
Joyce Calvin
Lynette Campbell
Dr. Edgar Canada
Toni & Joseph Carona
Brian Carter
Willi & Bill Caylor
Linda Chisari
Nancy Chubbuck
Andrea Clawson
June & Rick Collins
Joan Commons
Sandra Comrie
Kathleen Coniglio
Kelly & Allan Connell
Donna Van Eekeren & Dale Connelly
Leslie Corona

Joe Costa
Leon Covell
Penny & Skip Cox
Pam & Mike Dalton
Joe Dangelmaier
Marty De Los Rios
Dawn Diskin
Kate Doherty-Perez
Ron Drake
Edith Drcar
Alice & John Dryden
Mary & Al Duarte
Diane Dunaway
Teresa & Bill Dutton
Monica & Rob Eastin
Dick Edic
Kathleen Cannon & Richard Eiden
Elaine Eisenberg
Susan Claassen & Bella Elbensteiner
Ron Elbling
Patricia & Dr. John Eldon
Verona Endrizzi
Odette Engelberg
Louise & James Esposito
Deborah & Monte Etherton
Gail Eyler
Ruth Fairbanks
Joseph Faletti
Diane Fatica
Robert Feier
Suzanne & Karl Fleming
Joanna Fox
Erica Frank
Carole Franks
Molly Fredrickson
Kerry Freshman
Steven Frichette
Judith & William Friedel
Eileen Fritsch
Mary Frumkin
Cynthia & John Fullmer
Tom Gable
Karen & Roger Gabrielson
Natalie & Brian Ganji
Cheryl Gann
Judy & Dr. Lowell Gaspar
Christine & Peter Gault
Linda & Roger Gee
Ellen Geer
Daryl & Dr. Henry Gelender
Barbara Gellman
Wilma George
Ann & Ben Giangiulio
Marty & Jim Gigler
Kaylee Giraldo
Eleanor Girard
Eve & David Godfrey
Patty & Dan Gold
Louis Goldich
Ellen Goren
June Gottlieb
Amy & John Graham

Kenneth Grant
Guy Gray
Aleta Greer
Anna & Nathan Grinshpun
Sheryl Gross
Caroline & Bryan Gunner
Laurie & David Guss
Diane Gustafson
Ronald Gwynn
D.L. Hadden
Cristin Hagaman
Janice Hall
Linda & Mike Hall
R. Elaine Hanson
June Hope Harland
Andrea Harris
Elaine & Bill Hartleb
Drs. Anne-Charlotte Hanes Harvey & Michael Harvey
Sharon & Richard Hatch
Kathy Endris & Jeffrey Hatcher
Brittgie Hautelet
Joyce & Chris Hayes
Joyce Stratton & Paul Heller
Phyllis & Richard Hicks
Barbara & Dennis Higginbottom
Marion Hinchy
Dennis Hollenbeck
Dr. Denise Honer
Theresa Hooks
Donna & Richard Horne
Lee Human
Shari & Thomas Hume
Hiromi Imai-Dellario
Frances & Burton Israel
Rosel Jacobson
JoAnne & Jack Jaeger
Barbara Jaffe
Dr. Charles Jaffe
Jane & Duane Jensen
Christine Jeston-Caster
Leslie Johnson-Leech
Jennifer Jones
Ellen Covairt & Bernie Kalscheuer
Marcia Karadashian
Kathi & Gregory Karen
Linda Katz
Bill Kerlin
Miriam Kirschnier
Ellen Koutsky
Marilyn & William Kovach
Debby Neff & Dr. Arnold Kremer
Karen Knudson & John Kruckeberg
Niki & Dee Krutop
Sherill Kulp
Tom Lang
Judith Langoff
Irene & James Larrimore
Coleen Lassegard
John Lasser
Nancy Lawson
Mary & Terry Lehr

SUPPORT AND GIFTS TO NORTH COAST REP

Rhonda Amber & Jonathan Licht
Nancy Linck
Gayle Lipson
Carole Luery
Leanne Lynn
Gary Macek
Martha MacKenzie
Jim Maczko
Beverly Marcum
Mary Ann Marcuzzi
Deborah Martin
Lois Martin
Betty Mason
Linda Mason
Sara Matta
Sharon & Thomas Matus
Benita & Stanley Mayer
Dr. Sebastian Mazzotta
Patricia McCabe
Larry McCarthy
Gloria McColl Powell
Rita McConn-Stern
Jody & Jim McDonough
Mary & Elgie McGrath
Susan McKenna
Susan McLeish
Dan McReynolds
Julie Meier Wright
Barbara & Steven Mendell
Madonna Messina
Michele Michaels
Marge & Mike Michaelson
Eleni & Bill Miller
Melissa Miller
Stan Miller
Clark Mires
Nancy & Isaac Mizrahi
Ellen Montanari
Jan Mori
Amy Murad
Barbara & Charles Nelson
Toni Nickell
Sandy Nolan
Harold Noll
Melinda O'Brien
Jean & James O'Grady
Christine Jura Oster
Marcia & Larry Osterink
Denise Ovrom
Benita Page
Arghavan Pajouhandeh
Deborah Pantoni
Anne Speraw & Edward Parish
Tammy Parry

Jennifer Payne
Jaime Perez
Shelley & Neil Perl
Ursula Pertl
Mary & John David Peters
Susan Peters
William Phifer
Clarissa & Frederick Phillips
Larry Plotkin
Janet Podell
Ararat Pogolian
Debra & Stephen Pollack
Nancy & Bob Porter
Angie Preisendorfer
Jenni & Kim Prisk
The Putnam Family
Shideh Rad
Govindan Rajeev
Dave Rankin
Linda Rattray
Janine Reeder
Sondra Renwanz
DeeDee Rescher
Judy Rice
Connie & David Rittichier
Nancy Robertson
Mary Ann & John Rodarte
Shelley & Jeff Ross
Judith Rubenstein
Donna & Robert Ryan
Bonnie Sanchez
Marshall Sashkin
Wendy Schelew
Kyle Schlunegger
Charles Scholl
Miki & Steve Schorr
Joan Schultz
Dr. Janet Schwartz
Patti Schwellenbach
Dominick Scigliano
Amy Seals
Roy Sekigahama
Shari Severson
Stephanie Shapiro
Jerome Sharrin
Thomas Shaver
Dr. Donna Shaw
Katharine Sheehan
Carol & Roger Showley
Steven Siemers
Dr. Enid Singer
Beatrice & Charles Sklarewitz
Barbara Smith
Dorothy Smith

J.D. Smith
Paula Smith
Deborah & Robert Smyth
Nancy Snyder
Nancy & Bob Sonnhalter
Jo Anne Springer
Jedediah Staley
Gil Berry & Greg Stasik
Andrea Polesky & Adonis
Stassinopoulos
Andrea & Jeff Steinberg
Marguerite Stewart
John Sullivan
Sally Sutton Schulze
Rich Sylvester
Elliott Tarson
Nancy Taylor
Eileen & Matt Tebbetts
Susan Thompson
Sharon & Richard Ticho
Bonnie Tincup
Annette Torres
Ann Turley
Arlene Tuttle
Denise Tverdoch
Jerry Ursetti
Dayle Van Lom
Linda Vint
Stephanie Vrsnik
Debbie Waadt
Arnold Wallins
Livia Walsh
Laurel Wasserman
Maggie Riley-Haggan & Rob Watson
Kerry Webster-Humphreys
Deborah Weigel
Elizabeth & Mikel Weinberg
Lee Weiss
Annemarie Whalen
Margot White
Carol Wigent
Loreen & Roland Wilhelm
Dave Wilson
Elizabeth & Clinton Winant
Mark Wisniewski
Caryl Lees Witte
Virginia Wofford
Dorothy Wood
Rick Yeater
Kathy & Dr. John Zack
Cheryl & Richard Zales
Peggy Zenger
Charlie Zieky
Trude Zillgens

Thank You

If you are interested in seeing how you can play a greater leading role at North Coast Repertory Theatre, please contact Denise Young at denise@northcoastrep.org or (858) 481-2155 ext. 210.

We strive for accuracy, please send any corrections to the development office at (858) 481-2155 ext. 211.

NORTH COAST REP PRESIDENT'S ADVISORY COUNCIL

Lucie Arnaz
Kenneth Baca
Richard Dreyfuss

Kathleen Bell Flynn
Steve Flynn
Leonard Hirsch

Dave Roberts
Jay Sarno
Julie Sarno

FOUNDERS

Tom and Olive Blakistone

CORPORATE, FOUNDATION AND GOVERNMENT SUPPORT

Please join us in thanking the following businesses and government agencies for their support.

All donations listed from March 30, 2025 to March 30, 2026.

President's Circle \$25,000+

The Shubert Foundation
US BANK

Producer's Circle \$10,000+

American Assets Trust
The County of San Diego
at the recommendation of
Terra Lawson-Remer
ProtoStar Group

Director's Circle \$5,000

City of Carlsbad
City of Solana Beach
Daniel Morilak, SVP, Financial Advisor,
Family Wealth Director at Morgan Stanley
KPBS
Tresp Law, APC

Playwright's Circle \$2,500+

Metro Flooring
Gay & Lesbian Fund for San Diego

Designer's Circle \$1,000+

EDCO
ITEX Inland Valley
NEBCAL Printing

SPECIAL THANKS TO

Annmarie D'Ercole Boutique
Arthur Murray Dance Studio
B Cellars Vineyards and Winery
Bitchin' Sauce
Broadway San Diego
Burtech Family Winery
California Wine Festival
City Ballet of San Diego
Cygnet Theatre
Davis Estates
Del Mar Solana Beach Rotary
Destination Smokehouse & Eatery BBQ
Emerald Isle Golf Course
Ensui Sushi
Finnia Fine Clothing
Firenze Trattoria
The Fish Market
Flagship Cruises
Float
Glamour Nails
Handel's Homemade Ice Cream
HITS Del Mar Horse Park
Keane Studios
Koi Zen Cellars
La Jolla Playhouse
Laguna Playhouse
La Valle Coastal Club
Lomas Santa Fe Country Club
Manscaped
Mariposa Styling & Shopping
Mille Fleurs
Miraval Spa

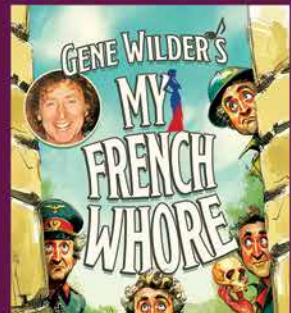
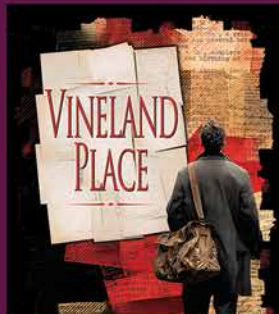
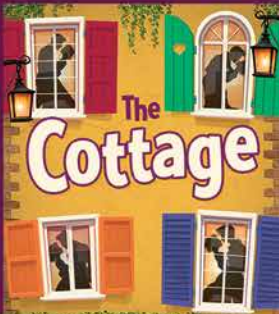
Moonlight Stage Productions
Murder n' Mayhem: Murder Mystery Parties
New Village Arts
Noelle Styles Salon
Oceanside Museum of Art
The Old Globe
OnStage Playhouse
The Op Games
Orfila Vineyards and Winery
Our Green Affair
Park Hyatt Aviara Resort, Golf Club, & Spa
Pink Lagoon Boutique
Premiere Medical Wellness
Rancho Valencia Resort & Spa
Rayluca Chocolate
Regina Kurtz Interior Design
The Roustabouts Theatre Co.
San Diego Botanic Garden
San Diego Padres
San Diego Symphony
San Diego Zoo Wildlife Alliance
Satori Designs
Scripps Ranch Theatre
Shutters on the Beach
Soapy Joe's
Somich Interior Design
Temecula Olive Oil
U.S.S. Midway Museum
Viejas Casino & Resort
Voice by Duffy
The Wine Connection

ANNOUNCING Season 45

Become a subscriber!

Buy 7 shows for the price of 6 with our 7-play subscription package! (Based on full price ticket for each show.)

North Coast Repertory Theatre proudly unveils its exciting 2026-2027 season, offering audiences an eclectic mix of premieres, a beloved classic, and a theatrical treasure. Under the artistic direction of David Ellenstein, the upcoming season promises to deliver exceptional theatrical experiences for patrons of all tastes.



NORTHCOASTREP.ORG

BOX OFFICE: 858-481-1055

GROUP SALES: 858-481-2155, X202

